

MONTHLY MEMBERSHIP PROGRESS REPORT

LOCATION AUSTRALIA

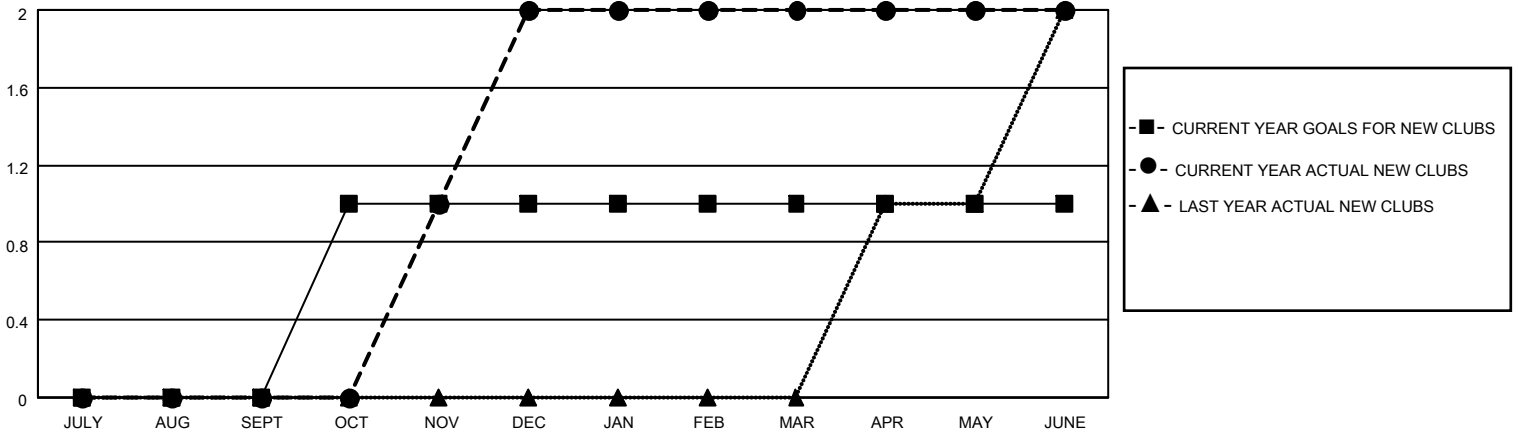
District 201N1

Results as of: 6/30/2021

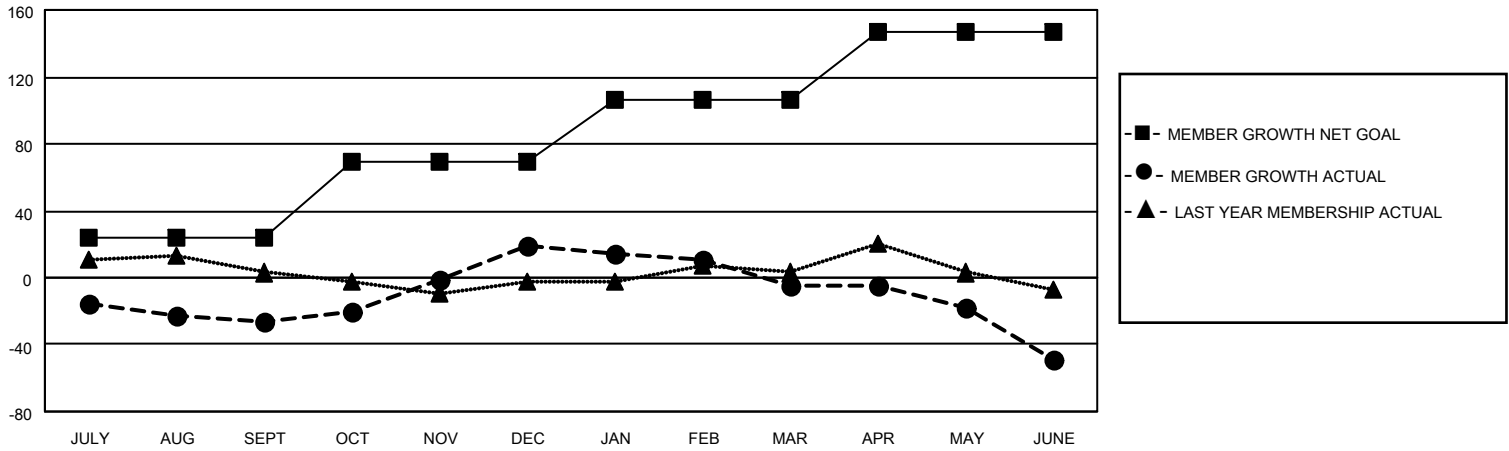
Clubs			
RESULTS FOR 2020-2021			
QUARTER	NEW CLUB GOAL	NEW CLUBS	DROPPED CLUBS
JULY/AUG/SEPT	0	0	0
OCT/NOV/DEC	1	2	0
JAN/FEB/MAR	0	0	0
APR/MAY/JUNE	0	0	1

Members			
RESULTS FOR 2020-2021			
QUARTER	MEMBER GROWTH NET GOAL	MEMBER GROWTH ACTUAL	DROPPED MEMBERS ACTUAL (including transfers)
JULY/AUG/SEPT	24	43	62
OCT/NOV/DEC	45	92	41
JAN/FEB/MAR	37	31	53
APR/MAY/JUNE	41	47	84

GOALS AND ACTUAL NEW CLUBS CUMULATIVE



GOALS AND ACTUAL MEMBERS CUMULATIVE



DROPPED CLUBS: 1

48 CLUBS OF 66 ADDED 1 OR MORE NEW MEMBERS

<u>GENDER DISTRIBUTION</u>	
MALE	925 (67.03%)
FEMALE	455 (32.97%)

<u>DROPPED MEMBERS</u>	
DECEASED	18
CLUB CANCELLED	1
OTHER	221
TOTAL	240

[CLICK HERE FOR CUMULATIVE MEMBERSHIP DATA](#)

TOTAL FAMILY UNIT MEMBERS	193
FAMILY MEMBERS PAYING HALF DUES	98